



CALENDAR OF EDUCATION INSPIRATION

AUSTRALIA & NEW ZEALAND JULY - DECEMBER 2019



#ASKFORWELLA

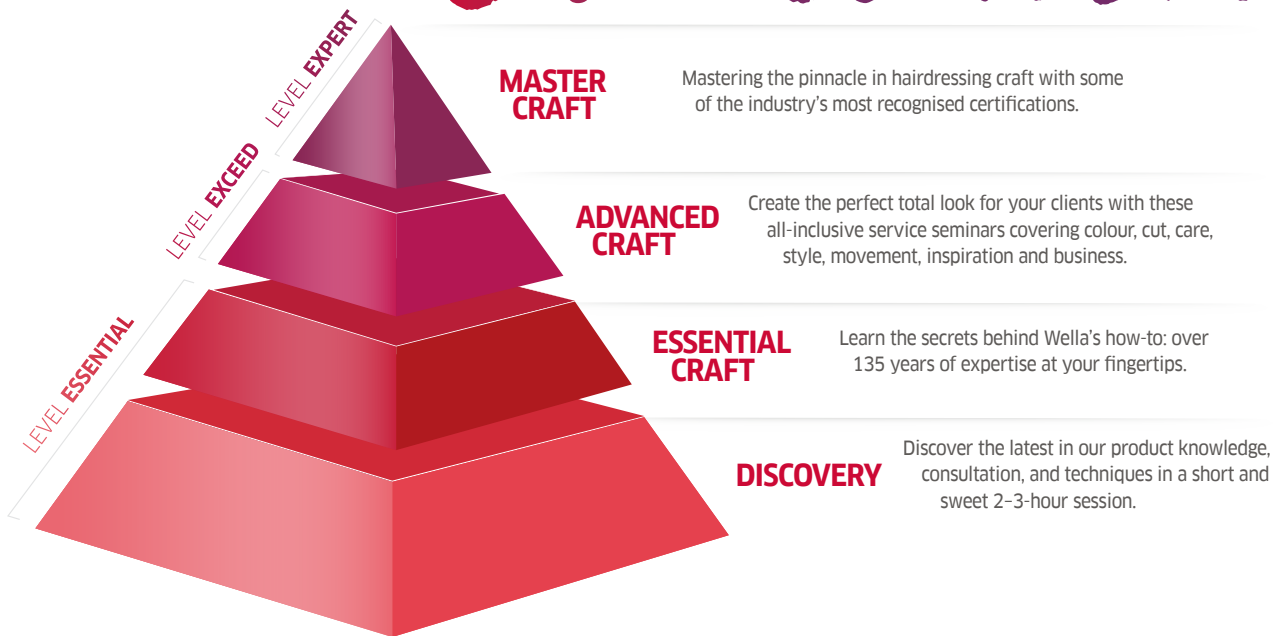
OUR PUREST COLOUR EVER

PERMANENT COLOUR WITH **ME⁺** TECHNOLOGY



Contact your Wella Sales Consultant or call **1300 885 002 AU**
or **0800 800 128 NZ** to find out more

FOUR LEVELS OF *Education*



BE THE BEST OF THE BEST **MASTER COLOR** *Expert*

ONE OF THE MOST REMARKABLE, SOUGHT AFTER AND WELL - RECOGNISED COLOUR ACCOLADES IN THE INDUSTRY

- > The Master Color Expert program helps to gain a fresh and exciting approach to colour and boost your business in the process
- > The Master Color Expert program provides a great pathway for the colourist/stylist in their career development
- > Develop and motivate your team through sharing inspirational colour knowledge

NEW

Online



- > New Master Color Expert now available online
LEARN ANYWHERE ANYTIME
- > 100% Digital Platform
- > Are you self-motivated and disciplined?
- > Do you prefer to learn online?
- > **APPLICATIONS:** wella.com/mastercolorexpert

ASK YOUR WELLA EDUCATOR FOR MORE INFORMATION

To determine your eligibility and pre-requisite requirements please contact your Wella Educator.

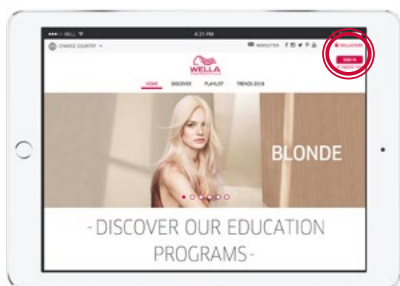
Perfect PARTNER

At Wella we are committed to being your partner in business, ensuring you get the right support, at the right time and in the right way to help you realise your goals and grow your business. Wella Education is always at your fingertips, available anytime, anywhere, 24/7.

Wella wants to be the Perfect Partner, to help you realise your ambitions, your dreams and achieve every success.

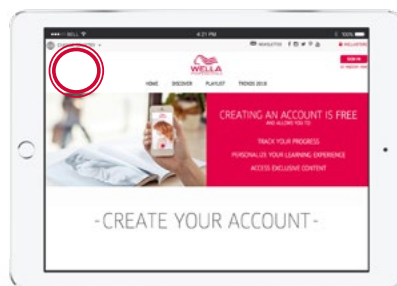


E-EDUCATION ANYTIME, ANYWHERE



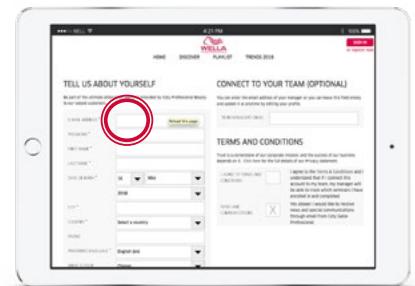
STEP 01

Log onto wella.com/education and tap on "Register Now"



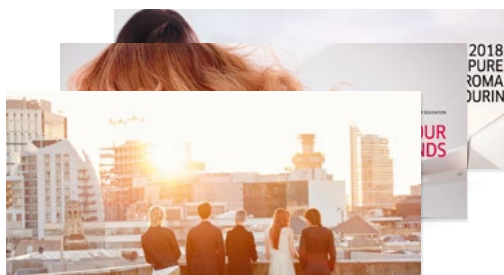
STEP 02

Change Country
Select Australia or New Zealand



STEP 03

Create your account...



STEP 04 FREE ACCESS

Our e-Education will create a whole new culture of online learning. Essentially, it uses the latest technology to educate professional hairdressers in an entirely different way. This is an incredible way of learning and gaining new creative skills in an instant. e-Education is open to all hairdressers and offers a wide range of online seminars, tutorials and step by steps... all at the swipe of a finger.

www.wella.com/education



Personalise
Your Learning
Experience



Develop
Your team's
Capabilities

Wella education is always at your fingertips, available any time, any where 24/7.

Essential Craft

ESSENTIAL COLOUR

▲ ESSENTIAL 1 DAY

In this seminar you will gain an understanding of the theory behind the colour circle, numbering system, natural pigmentation and go on a journey of your own discovery. You get to know the basic elements of colour related to different hair structure and you will discover for yourself the different Wella Professionals colour products and the various technologies behind them.

TIME: 10:00am - 5:00pm

FORMAT: Interactive Workshop

FACILITATOR: Wella Professionals Educator

INVESTMENT: \$235

WHAT IS PROVIDED: Lunch

WHAT TO BRING: All hairdressing equipment, closed toe shoes

WHO SHOULD ATTEND: Stylists who want to learn the foundation of Colour Theory and gain an understanding of the basic elements of Colour OR stylists wishing to progress to Master Color Expert as a pre-requisite seminar.

ESSENTIAL PORTFOLIO

▲ ESSENTIAL 1 DAY

This essential knowledge will help you gain professional confidence when using the vast portfolio of Wella Professionals colour brands. This theory based seminar is designed to increase your understanding of general colour principles, product information & usage.

TIME: 10:00am - 5:00pm

FORMAT: Interactive Workshop

FACILITATOR: Wella Professionals Educator

INVESTMENT: \$235

WHAT IS PROVIDED: Lunch

WHO SHOULD ATTEND: Stylists who are new to the Wella Professionals colour portfolio or those wishing to refresh their knowledge.

COLOUR CRAFT HIGHLIGHTS

▲ ESSENTIAL 1 DAY

Master the skill of foiling and working with freehand colour techniques to boost your confidence and increase your repertoire of colour services. Receive guidance on the effective use of the Wella Professionals colour portfolio when working with these techniques.

TIME: 10:00am - 5:00pm

FORMAT: Interactive Workshop

FACILITATOR: Wella Professionals Educator

INVESTMENT: \$235

WHAT IS PROVIDED: Lunch and Mannequin Head

WHAT TO BRING: All hairdressing equipment, closed toe shoes.

WHO SHOULD ATTEND: Newly qualified stylists or apprentices, stylist returning to the salon.

MAKING MOVEMENT

▲ ESSENTIAL 1 DAY **NEW**

Texture and loose waves have been a celebrity favourite, which has created constant demand for movement in the salon. While you're mastering the skills of creating movement, we'll also help you master the art of dressing curls - to make you the curly-haired girls' go-to stylists. This course is perfect for newcomers to perming or movement and will give you the confidence to promote the services to your clients.

TIME: 10:00am - 5:00pm

FORMAT: Interactive Workshop

FACILITATOR: Wella Professionals Educator

INVESTMENT: \$235

WHAT IS PROVIDED: Lunch and Mannequin Head

WHAT TO BRING: All hairdressing equipment, closed toe shoes

WHO SHOULD ATTEND: Stylists of all levels.

COLUMN CONSEQUENCES

▲ ESSENTIAL 1 DAY

How do you make sure you have a full column and enjoy your work? Whose responsibility is that? This course examines your attitude to your work, what you feel comfortable doing, what stretches you and what freaks you out. An easy to follow guide will help you establish the clientele you want to have.

TIME: 10:00am - 5:00pm

FORMAT: Interactive Workshop

FACILITATOR: Wella Professionals Educator

INVESTMENT: \$235

WHAT IS PROVIDED: Lunch

WHO SHOULD ATTEND: Stylists who interact with clients on a daily basis and would like to understand how to maximise the opportunities within their consultations.

Advanced Craft

BLONDE SPECIALIST NEW

 ADVANCED

 DAY

Join us as one of our top colour artists and Wella educators join together to deliver the most breathtaking and refined blonde results, with a focus on our Premium colour portfolio.

EXPECT TO:

- > Achieve technical mastery within your blonde selections
- > Get the best out of ALL of our blonde portfolio from lightening to toning
- > Create a tailored in salon treatment and home care regime to maintain the healthiest, shiniest results - hair quality and integrity is key!

TIME: 10:00am - 5:00pm

FORMAT: Interactive Workshop

FACILITATOR: Wella Professionals Educator and Guest Artist

INVESTMENT: \$250 (no discounts apply)

WHAT IS PROVIDED: Lunch

WHAT TO BRING: All hairdressing equipment, closed toe shoes, and a blonde model from 12:30pm - 5pm, hair must be in generally good condition, no colour corrections.

WHO SHOULD ATTEND: Senior stylists who want to explore the potential of our FULL blonde portfolio.

WELLA REDS NEW

 ADVANCED

 DAY

The Wella name is synonymous with RED but with so many incredible options it can be hard to decide. This seminar is designed to give you confidence when working with every type of Wella RED from the hottest corals in Color Fresh Create to the most natural look and feel of Illumina coppers or the high impact and fiery fashion shades in the new Koleston Perfect.

TIME: 10:00am - 5:00pm

FORMAT: Interactive Workshop

FACILITATOR: Wella Professionals Educator

INVESTMENT: \$300

WHAT IS PROVIDED: Lunch

WHAT TO BRING: All hairdressing equipment, a model from 12:30pm - 5pm who is open to a copper or red result

WHO SHOULD ATTEND: Senior stylists who are challenged by reds or those who wish to refine their selections to create more unique, creative and customised results.

HIGH IMPACT PLACEMENT NEW

 ADVANCED

 DAY

As colourists we are always looking for new and exciting techniques to excite our clients and ourselves.

In this seminar you will understand how colour placement can influence face shape and enhance a haircut. You will devise your own creative techniques and sectioning patterns to create a unique design that is customized to your client.

TIME: 10:00am - 5:00pm

FORMAT: Interactive Workshop

FACILITATOR: Wella Professionals Educator

INVESTMENT: \$300

WHAT IS PROVIDED: Lunch

WHAT TO BRING: All hairdressing equipment, closed toe shoes, and a model from 12:30pm - 5pm who is open to change, hair must be in generally good condition, no colour corrections.

WHO SHOULD ATTEND: Stylist towards the end of their apprenticeship or senior stylist wanting to offer their clients new, creative colour techniques.

CREATIVE CORRECTIVE NEW

 ADVANCED

 DAY

These days almost every colour involves some form of correction and as far as clients are concerned, the bigger the transformation the better. From dealing with a 3 month regrowth, to removing warm bands, adding in some natural tone or reducing colour build up, you will learn how to 'bend' the rules of colour correction to get the kind of results your clients REALLY want.

TIME: 10:00am - 5:00pm

FORMAT: Interactive Workshop

FACILITATOR: Wella Professionals Educator

INVESTMENT: \$300

WHAT IS PROVIDED: Lunch

WHAT TO BRING: All hairdressing equipment, closed toe shoes, and a colour correction model from 12:30pm - 5pm who is open to a strong colour change. Hair must be in generally good condition.

WHO SHOULD ATTEND: Senior stylists who create the most current, fashion focussed colour correction results in salon

PRE-REQUISITES: Must have first completed Colour Correction.

COUTURE COLOUR

NEW

▲ ADVANCED 1 DAY

Couture Colour is a superior colour service experience that gives you clients customised looks as unique as they are. This experience is brought to life by providing the tools to become the Perfect Beauty Coach, implementing the 6 elements of consultation.

TIME: 10:00am – 5:00pm

FORMAT: Interactive Workshop

FACILITATOR: Wella Professionals Educator

INVESTMENT: \$300

WHAT IS PROVIDED: Lunch

WHAT TO BRING: All hairdressing equipment, closed toe shoes, model required 12:30pm - 5:00pm who is open to change.

WHO SHOULD ATTEND: Stylist looking to deliver customised consultation services to delight their clients, visit after visit.

COLOUR CORRECTION

NEW

▲ ADVANCED 1 DAY

In this seminar you will gain and understanding of all types of colour correction clients You will gain knowledge of artificial pigments, the colour circle, Wella Professionals colour portfolio and experience the various ways of usage. You will take yourself on the journey of learning the different colour correction techniques.

TIME: 10:00am – 5:00pm

FORMAT: Interactive Workshop

FACILITATOR: Wella Professionals Educator

INVESTMENT: \$300

WHAT IS PROVIDED: Lunch

WHAT TO BRING: All hairdressing equipment, closed toe shoes.

WHO SHOULD ATTEND: Stylists who wish to gain a deep understanding and learning of colour correction OR stylists wishing to progress to Master Color Expert as a pre-requisite seminar.

COLOUR GENIUS

NEW

▲ ADVANCED 1 DAY

Deepen your knowledge in mixing colours creatively. Explore with a hands on approach how to broaden the usage of the colour portfolio. Bespoke colours for your clients, using new techniques and placement that impact end results. Hands on workshop with a creative holistic approach to reflect a salon scenario.

TIME: 10:00am – 5:00pm

FORMAT: Interactive Workshop

FACILITATOR: Wella Professionals Educator

INVESTMENT: \$300

WHAT IS PROVIDED: Lunch and Mannequin Head

WHAT TO BRING: All hair dryers and brushes.

WHO SHOULD ATTEND: Stylists looking to expand their creativity across our colour portfolio.

EIMI STYLE AND QUICK COLOUR CHANGE

NEW

▲ ADVANCED 1 DAY

The hottest styling looks enhanced with a flash of colour! Grow your styling skills and upgrade your clients to quick, temporary colour ahead of the party season.

TIME: 10:00am – 5:00pm

FORMAT: Interactive Workshop

FACILITATOR: Wella Professionals Educator and Guest Artist

INVESTMENT: \$250 (no discounts apply)

WHAT IS PROVIDED: Lunch

WHAT TO BRING: All hairdressing equipment including all hot tools, pins and elastics for styling hair up. A long haired model from 12:30pm – 5pm, who desires a temporary or semi-permanent colour change.

WHO SHOULD ATTEND: Stylist towards the end of their apprenticeship or senior stylist wanting to expand their styling repertoire and upsell colour in salon.

COUTURE COLOUR FREEHAND

▲ ADVANCED 1 DAY

Learn to refine and evolve your freehand colour techniques. Utilise to their full potential the products in our Wella Colour portfolio designed specifically to create seamless lightening, blending and colour transition. Reflect on the best of our past TREND Collection techniques to create the perfect freehand colour design that is bespoke to each client, enhancing their individual beauty.

TIME: 10:00am – 5:00pm

FORMAT: Interactive Workshop

FACILITATOR: Wella Professionals Educator

INVESTMENT: \$300

WHAT IS PROVIDED: Lunch

WHAT TO BRING: All hairdressing equipment, closed toe shoes, blonde model required from 12:30pm - 5:00pm.

WHO SHOULD ATTEND: Senior stylists looking to refine their freehand colour skills.



COLOUR BRILLIANCE & PROTECTION

NEW INGREDIENTS
ADVANCED TECHNOLOGY
VITAMINS



INVIGO

INVIGORATING CARE BLENDS. TIME TO RECHARGE.

Contact your Wella Sales Consultant or call 1 300 885 002 AU or 0800 800 128 NZ to find out more.

www.wella.com | [@wellapro_au](https://twitter.com/wellapro_au) | [@wellapro_nz](https://twitter.com/wellapro_nz) | [#InvigoMoments](https://twitter.com/InvigoMoments)

www.wella.com/education



Master Craft

SEXY SCIENCE

 MASTER

Isn't it fascinating how every client's hair is slightly different? Different textures, different tones, different ways of responding to chemical processes. Sexy Science will enable you to become the oracle on the subject of hair. This is an information-packed two day course. On day one you will discover everything you need to know about hair structure, while day two is all about the science of hair colour. You'll gain an understanding of why hair behaves differently and what you can do to achieve optimum results.

 DAY

TIME: 10:00am - 5:00pm

FORMAT: Interactive Workshop

FACILITATOR: Wella Professionals Educator

INVESTMENT: \$470

WHAT IS PROVIDED: Lunch

WHO SHOULD ATTEND: Experienced Senior Stylists, Master Colour Experts, or stylists wishing to progress to Master Color Expert as a pre-requisite seminar.

Calendar Dates AUSTRALIA

NSW

LOCATION	DATE	TIME	SEMINAR
Dubbo	Monday 29th July	10:00am - 05:00pm	High Impact Placement
Newcastle	Monday 29th July	10:00am - 05:00pm	Couture Colour Freehand
Sydney	Monday 5th August	10:00am - 05:00pm	Couture Colour Freehand
Sydney	Monday 12th August	10:00am - 05:00pm	EIMI Style and Quick Colour Change
Sydney	Monday 12th August	10:00am - 05:00pm	Column Consequences
Canberra	Monday 19th August	10:00am - 05:00pm	High Impact Placement
Sydney	Monday 19th August	10:00am - 05:00pm	Colour Craft Highlights
Sydney	Monday 26th August	10:00am - 05:00pm	Colour Correction
Sydney	Monday 26th August	10:00am - 05:00pm	Essential Portfolio
Sydney	Monday 2nd September	10:00am - 05:00pm	Blonde Specialist
Sydney	Monday 9th September	10:00am - 05:00pm	Essential Colour
Newcastle	Monday 9th September	10:00am - 05:00pm	Blonde Specialist
Sydney	Monday 16th September	10:00am - 05:00pm	High Impact Placement
Dubbo	Monday 16th September	10:00am - 05:00pm	Blonde Specialist
Sydney	Monday 23rd September	10:00am - 05:00pm	Wella REDS
Canberra	Monday 23rd September	10:00am - 05:00pm	Blonde Specialist
Newcastle	Monday 14th October	10:00am - 05:00pm	EIMI Style and Quick Colour Change
Sydney	Monday 14th October	10:00am - 05:00pm	Sexy Science
Sydney	Tuesday 15th October	10:00am - 05:00pm	Sexy Science
Sydney	Monday 21st October	10:00am - 05:00pm	Making Movement
Sydney	Monday 4th November	10:00am - 05:00pm	Essential Portfolio
Sydney	Monday 4th November	10:00am - 05:00pm	Creative Corrective
Sydney	Monday 11th November	10:00am - 05:00pm	Colour Genius

LOCATION	DATE	TIME	SEMINAR
Melbourne	Monday 5th August	10:00am - 05:00pm	Wella Reds
Melbourne	Monday 12th August	10:00am - 05:00pm	Couture Colour
Melbourne	Monday 19th August	10:00am - 05:00pm	Essential Colour
Melbourne	Monday 26th August	10:00am - 05:00pm	EIMI Styling and Quick Colour Change
Melbourne	Monday 2nd September	10:00am - 05:00pm	Colour Correction
Melbourne	Monday 9th September	10:00am - 05:00pm	Colour Craft Highlights
Melbourne	Monday 9th September	10:00am - 05:00pm	Column Consequences
Melbourne	Monday 16th September	10:00am - 05:00pm	Blonde Specialist
Melbourne	Monday 23rd September	10:00am - 05:00pm	Sexy Science
Melbourne	Tuesday 24th September	10:00am - 05:00pm	Sexy Science
Melbourne	Monday 30th September	10:00am - 05:00pm	High Impact Placement
Melbourne	Monday 7th October	10:00am - 05:00pm	Making Movement
Melbourne	Monday 14th October	10:00am - 05:00pm	Couture Colour Freehand
Melbourne	Monday 21st October	10:00am - 05:00pm	Colour Genius
Melbourne	Monday 28th October	10:00am - 05:00pm	Creative Corrective
Melbourne	Monday 11th November	10:00am - 05:00pm	Essential Portfolio

QLD

LOCATION	DATE	TIME	SEMINAR
Brisbane	Monday 5th August	10:00am - 05:00pm	Couture Colour
Townsville	Monday 5th August	10:00am - 05:00pm	Colour Correction
Brisbane	Monday 12th August	10:00am - 05:00pm	Sexy Science
Brisbane	Tuesday 13th August	10:00am - 05:00pm	Sexy Science
Brisbane	Monday 19th August	10:00am - 05:00pm	Essential Colour
Brisbane	Monday 26th August	10:00am - 05:00pm	High Impact Placement
Brisbane	Monday 2nd September	10:00am - 05:00pm	Wella REDS
Brisbane	Monday 9th September	10:00am - 05:00pm	Colour Craft Highlights
Brisbane	Monday 16th September	10:00am - 05:00pm	Colour Genius
Brisbane	Monday 23rd September	10:00am - 05:00pm	Colour Correction
Brisbane	Monday 30th September	10:00am - 05:00pm	Blonde Specialist
Brisbane	Monday 14th October	10:00am - 05:00pm	Column Consequences
Brisbane	Monday 21st October	10:00am - 05:00pm	EIMI Styling and Quick Colour Change
Brisbane	Monday 21st October	10:00am - 05:00pm	Essential Portfolio
Brisbane	Monday 28th October	10:00am - 05:00pm	Creative Corrective
Brisbane	Monday 11th November	10:00am - 05:00pm	Couture Colour Freehand
Brisbane	Monday 18th November	10:00am - 05:00pm	Making Movement

SA

LOCATION	DATE	TIME	SEMINAR
Adelaide	Monday 12th August	10:00am - 05:00pm	Essential Colour
Adelaide	Monday 19th August	10:00am - 05:00pm	Column Consequences
Adelaide	Monday 26th August	10:00am - 05:00pm	High Impact Placement
Adelaide	Monday 2nd September	10:00am - 05:00pm	Colour Correction
Adelaide	Monday 9th September	10:00am - 05:00pm	Colour Genius
Adelaide	Monday 23rd September	10:00am - 05:00pm	Couture Colour
Adelaide	Monday 30th September	10:00am - 05:00pm	Wella REDS
Adelaide	Monday 14th October	10:00am - 05:00pm	Blonde Specialist
Adelaide	Monday 21st October	10:00am - 05:00pm	Creative Corrective
Adelaide	Monday 4th November	10:00am - 05:00pm	Couture Colour Freehand
Adelaide	Monday 11th November	10:00am - 05:00pm	Colour Craft Highlights
Adelaide	Monday 18th November	10:00am - 05:00pm	Making Movement

LOCATION	DATE	TIME	SEMINAR
Perth	Monday 5th August	10:00am - 05:00pm	EIMI Styling and Quick Colour Change
Perth	Monday 12th August	10:00am - 05:00pm	Couture Colour
Perth	Monday 19th August	10:00am - 05:00pm	Colour Correction
Perth	Monday 26th August	10:00am - 05:00pm	Wella REDS
Perth	Monday 26th August	10:00am - 05:00pm	Essential Portfolio
Perth	Monday 2nd September	10:00am - 05:00pm	Colour Craft Highlights
Perth	Monday 9th September	10:00am - 05:00pm	Essential Colour
Perth	Monday 16th September	10:00am - 05:00pm	High Impact Placement
Perth	Monday 23rd September	10:00am - 05:00pm	Column Consequences
Perth	Monday 7th October	10:00am - 05:00pm	Colour Genius
Perth	Monday 14th October	10:00am - 05:00pm	Creative Corrective
Perth	Monday 21st October	10:00am - 05:00pm	Couture Colour Freehand
Perth	Monday 28th October	10:00am - 05:00pm	Sexy Science
Perth	Tuesday 29th October	10:00am - 05:00pm	Sexy Science
Perth	Monday 4th November	10:00am - 05:00pm	Making Movement
Perth	Monday 4th November	10:00am - 05:00pm	Essential Colour
Perth	Monday 11th November	10:00am - 05:00pm	Blonde Specialist
Perth	Monday 18th November	10:00am - 05:00pm	Couture Colour Freehand

Calendar Dates

NEW ZEALAND

NZ

LOCATION	DATE	TIME	SEMINAR
Wellington	Monday 9th September	10:00am - 05:00pm	High Impact Placement
Hawkes Bay	Monday 9th September	10:00am - 05:00pm	High Impact Placement
Dunedin	Monday 16th September	10:00am - 05:00pm	High Impact Placement
Christchurch	Monday 23rd September	10:00am - 05:00pm	Creative Corrective
New Plymouth	Monday 23rd September	10:00am - 05:00pm	Colour Craft Highlights
Christchurch	Monday 28th October	10:00am - 05:00pm	High Impact Placement
New Plymouth	Monday 14th October	10:00am - 05:00pm	Colour Genius
New Plymouth	Monday 4th November	10:00am - 05:00pm	High Impact Placement

HOW TO BOOK



Please speak to your Wella Educator or please call 1300 661 488 Australia or 0508 493 552 New Zealand email: wellaeducationnz@cotyinc.com.

If you have any questions or require further information on content or course availability please call the booking support line or speak with your Wella Educator.

PAYMENT OPTIONS

01. Charge to your Wella Salon Account
02. Pay via Credit Card, Mastercard, Visa and AMEX are accepted.

**Processing fees will apply*

CANCELLATION POLICY

If you are unable to attend a seminar, 14 days' prior notice is required, the following re-booking options apply:

- > Substitute the named attendee for the seminar, without cost.
- > Re-book for the same seminar at a later date (one date change allowed,

- > Upgrade to another seminar at a later date and pay the difference (one change allowed).

Customers who do not attend the seminar without calling to cancel will be considered as a "no-show" and will be charged at the full price of the seminar.

** In the event of a course being cancelled or postponed due to low enrolment or unforeseen circumstances, refunds will be processed where due. Occasionally, course content may change as a result of new information and product development. Wella Professionals reserves the right to update their courses and guest artists without notice.*

ELECTRICAL APPLIANCES

Please ensure all electrical appliances have been tested and tagged for safety by a registered approver to Australian standards of electrical appliances.



NEW INGREDIENTS
ADVANCED TECHNOLOGY
VITAMINS

INVIGO

INVIGORATING CARE BLENDS. TIME TO RECHARGE.

www.wellastore.com

Contact your Wella Sales Consultant or call
1300 885 002 AU or **0800 800 128 NZ**
to find out more

