

#COPPERSUNSET TRANSFORMATIONAL TONING by COLOR TOUCH



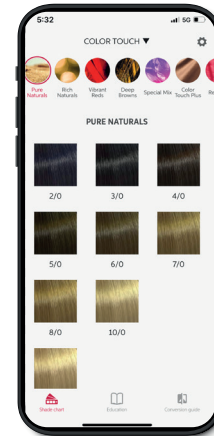
AFTER



BEFORE



JAMES EARNSHAW
Wella Professionals UK&I
Digital Ambassador



CLICK HERE TO LEARN MORE
- On Color Touch, INVIGO Enrich,
download our shade guide app
and be inspired.

FORMULAS

LIGHTENING FORMULA A:

Roots: Koleston Perfect
60g 10/0 Koleston Perfect
60ml 12% Welloxon Perfect Developer

TRANSFORMATIONAL TONING FORMULA B:

Back triangle Rusty Copper
20g 7/47 + **10g** 8/41 + **1.9%** Color Touch Emulsion

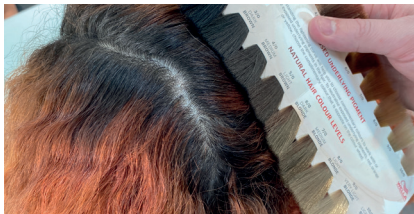
FORMULA C:

Side triangles Cherry Copper
20g 66/44 + **5g** 8/41 + **1.9%** Color Touch Emulsion

FORMULA D:

Front triangle Copper Tan
20g 8/41 + **5g** 7/43 + **1.9%** Color Touch Emulsion

STEP BY STEP



Step 1 - Consultation

Make sure to use the Wella Professionals 3 step consultation process to determine your clients colour vision.



Step 2 - Root application

Mix and apply Formula A to the root area. Develop your root area for 30-40 minutes.



Step 3 - Sectioning

Once your root colour has developed, rinse, shampoo and apply INVIGO Post Color Treatment for 5 minutes. Section the hair ready for your toning application.



Step 4 - Rinse and remove

Mix and apply formula B, C and D to the hair, develop for up to 20 minutes.



Step 5 - Style

Apply INVIGO Enrich Frizz Control Cream and diffuse hair to encourage curl pattern to develop. Use a GHD mini wand to accent curls is necessary.

HOME CARE REGIME

NOURISHING *homecare essentials*



DEEP NOURISHING SHAMPOO WITH GOJI BERRY
Nourishes dry or stressed hair leaving it full of vitality. With Nutri-Enrich Complex.



DEEP NOURISHING CONDITIONER WITH GOJI BERRY
Instantly moisturises dry or stressed hair leaving it full of vitality. With Nutri-Enrich Complex.



DEEP NOURISHING MASK WITH GOJI BERRY
Deeply replenishes dry or stressed hair leaving it full of vitality. With Nutri-Enrich Complex.

ENRICHING *blow dry saviours*



FRIZZ CONTROL CREAM WITH GOJI BERRY
Instantly helps prevent frizz by straightening unruly hair while nourishing it. Leaving hair soft, shiny and full of vitality.

Share your looks for a chance to be featured and make sure you tag us using @Wellahairuki #Wellacolour #makechange

#PEACH BELLINI

TRANSFORMATIONAL TONING by COLOR TOUCH



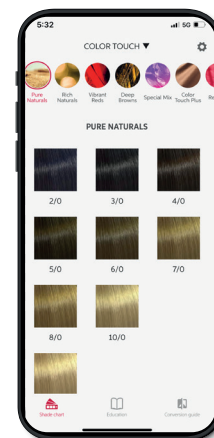
AFTER



BEFORE



JAMES EARNSHAW
Wella Professionals UK&I
Digital Ambassador



CLICK HERE TO LEARN MORE
- On Color Touch, INVIGO Enrich,
download our shade guide app
and be inspired.

FORMULAS



LIGHTENING FORMULA A:

Roots:
40g Blondor Soft Blonde Cream
60ml 6% Welloxon Perfect Developer



FORMULA B:

Ends:
30g Blondor Soft Blonde Cream
60ml 4% Welloxon Perfect Developer + Wellaplex



TRANSFORMATIONAL TONING FORMULA C:

Front panel - Peach Bellini
10g 10/34 + **1g** 5/5 + **1.9%** Color Touch Emulsion



FORMULA D:

Back - Strawberry Fizz
30g 10/34 + **5g** 55/65 + **1.9%** Color Touch Emulsion

STEP BY STEP



Step 1 - Consultation

Make sure to use the Wella Professionals 3 step consultation process to determine your clients colour vision.



Step 2 - Root application

Mix and apply Formula A to the root area. Then work with Formula B to create an even base from root to tip.



Step 3 - Development and pre-toning hair preparation

Make sure to check that your hair is the right underlying warmth, (yellow). Rinse the hair and apply WELLAPLEX No2 Bond Stabilizer, shampoo and apply Blondor Seal & Care.



Step 4 - Sectioning

Section the hair into the 2 sections. The front section will enable a face framing affect.



Step 5 - Transformational toning

Mix and apply formula C+D, start your application at the back with formula D then develop for up to 20 minutes.

HOME CARE REGIME

NOURISHING *homecare essentials*



DEEP NOURISHING SHAMPOO WITH GOJI BERRY
Nourishes dry or stressed hair leaving it full of vitality. With Nutri-Enrich Complex.



DEEP NOURISHING CONDITIONER WITH GOJI BERRY
Instantly moisturises dry or stressed hair leaving it full of vitality. With Nutri-Enrich Complex.



DEEP NOURISHING MASK WITH GOJI BERRY
Deeply replenishes dry or stressed hair leaving it full of vitality. With Nutri-Enrich Complex.



ENRICHING *blow dry saviours*



WONDER BALM WITH GOJI BERRY
Instant deep nourishment. For smoothness, manageability and movement. With Nutri-Enrich Complex.

Share your looks for a chance to be featured and make sure you tag us using @Wellahairuki #Wellacolour #makechange