

CREATINE⁺ PERMANENT CURLS/WAVES WITH WELLA **PLEX**



BEFORE



PREPARATION



1.

PREPARE the hair
with INVIGO Aqua
Pure Shampoo.
Towel-dry.

2.

WIND HAIR
onto rods.



APPLICATION

3.



APPLY CREATINE+ Curl Lotion, then leave to develop. Determine the final development time by taking test curls at different areas of the head. Open a rod gently to see if the hair is curled.

4.



WHEN the curls seem sufficient rinse well with rods on (rinse for 3 minutes).

APPLICATION



CREATINE+ CURL / WAVE VARIANT	WITH HEAT	WITHOUT HEAT
(C) FOR COLORED OR SENSITIZED HAIR	8 – 12 min	10 – 20 min
(N) FOR NORMAL TO RESISTANT HAIR	10 – 15 min	15 – 20 min

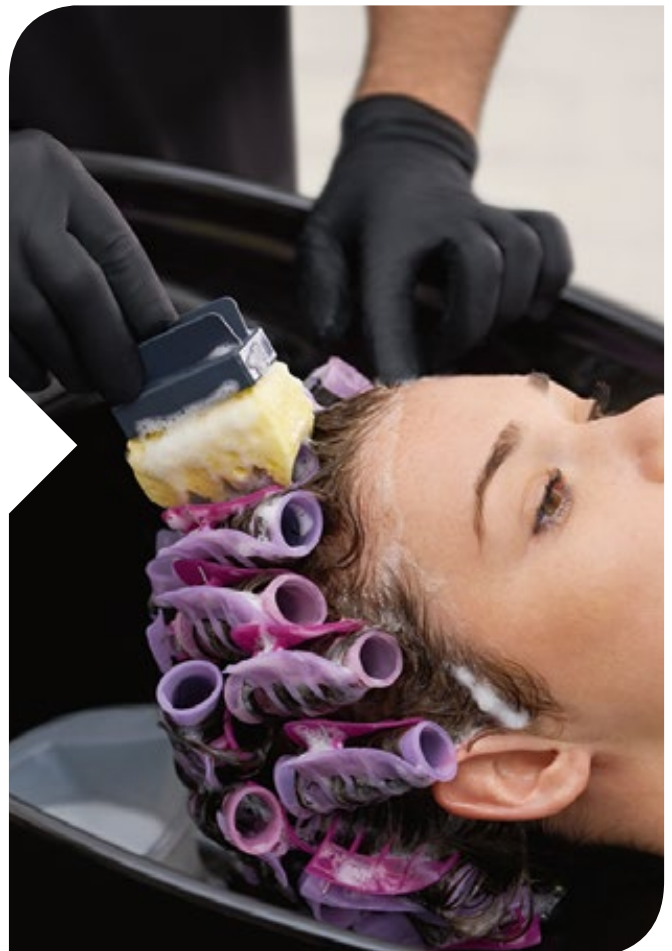
NEUTRALIZING

BEFORE NEUTRALIZING In case of service with WELLAPLEX, apply N°1 Bond Maker after rinsing off the curl lotion. Mix WELLAPLEX N°1 Bond Maker with water (1:6). Apply on rods and develop for 5 minutes. Rinse.



5.

NEUTRALIZING: After rinsing gently, remove the excess water by tapping with a towel. Measure 100 ml of neutralizer (ready-to-use) in a bowl. Apply 2/3 of the neutralizer on rods with a sponge and leave in for 5 minutes. (You may also use an application bottle).



NEUTRALIZING



6.

REMOVE the rods. Apply the remaining 1/3 neutralizer mixture onto the hair and leave to develop for 5 more minutes and rinse.

7.

FINISH WITH Perm Post Treatment.



ALTERNATIVE STEP 7

In case of service with WELLAPLEX, use N°2 Bond Stabilizer instead of post perm treatment. Apply on damp hair, develop for 10 minutes and rinse well.

FINISH

8.

TOWEL DRY and style with EIMI Ocean Spritz for defined look enhance curls with curler. For more casual look scrunch the curls let air dry.



CREATINE+ CURL & WAVE NEUTRALIZER:

Ready-to-use
neutralizer - no need to
mix with water.

CARE AND STYLING

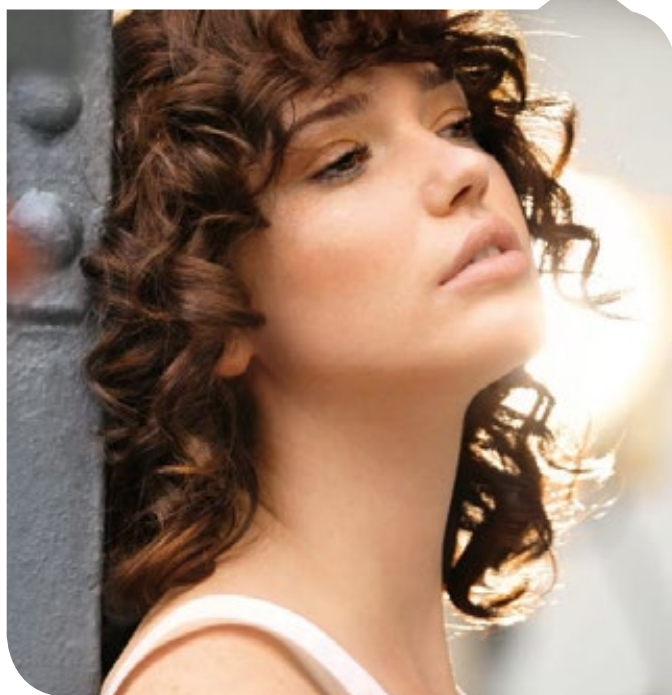
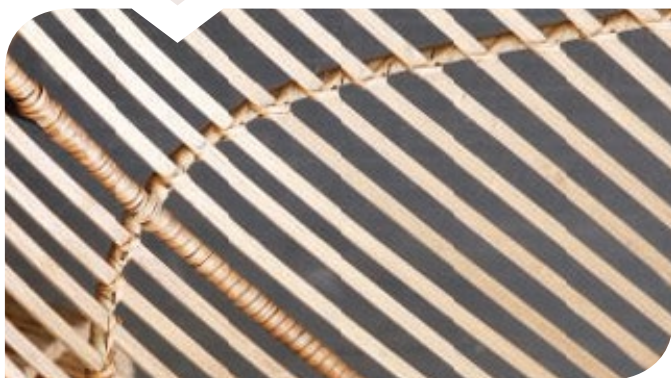


RECOMMENDED HOME CARE AND STYLING REGIMEN

- INVIGO NUTRI-ENRICH Shampoo, Conditioner and Mask
- FUSION Shampoo and Conditioner
- EIMI Sugar Lift



AFTER



WELLA THE HEART OF HAIRDRESSING

wella.com/education

