



THE ART OF CUT & COLOR

WELCOME

If you live for the moment when cut, color, and style unite to tell a client's story, this seminar turns that passion into power. Explore how color placement and tailored cutting sculpt the silhouette, shift the illusion of length, and contour every detail for effortlessly flattering results.

- 1. 3-STEP CONSULTATION
- 2. SILHOUETTE
- 3. LENGTH
- 4. CONTOURING
- 5. BRONDE BIXIE
- 6. BEACH BLONDE

3 STEP CONSULTATION



① IDENTITY WHO IS YOUR CLIENT?

PERSONALITY & LIFESTYLE

What fashion & trends inspire you?

Describe your style...

What don't you like?

COMMITMENT & BUDGET

How often do you visit the salon?

How much time do you spend on your hair in the morning?

How much money do you spend on your hair each month?

TECHNICAL ANALYSIS & SUITABILITY

Tell me about your hair history.

Do you know your skin tone?

Do you prefer warm or cool colors in your hair?



② DESTINATION WHAT DOES YOUR CLIENT WANT?

CUT COLOR STYLE DIRECTION

Describe your desired color / cut / style.

Which celebrity hair inspires you?

What don't you like?

SUBTLE OR DRASTIC CHANGE?

Which cut / color / style do you want? Or can I advise you?

Show me images of hair you like.

Tell me about the type of change you want to have.

HAIR & SCALP CONDITION

Tell me about your current hair & scalp condition.

What challenges do you have with your hair & scalp?

Tell me about the products that you don't like.



③ SERVICE HOW WILL YOU GET THERE?

TECHNIQUES & SERVICES

Do you need to lighten / darken / change the tone?

Which techniques & services will you perform?

Which section patterns?

BRANDS & SHADES CHOICE

Soft / subtle (Illumina Color & Shinefinity)

Vibrant / intense (Koleston Perfect & Color Touch)

Which shades? (Light / dark / warm / cool / neutral / natural)

COST, DURATION, CARE & STYLING

How much to charge for the services?

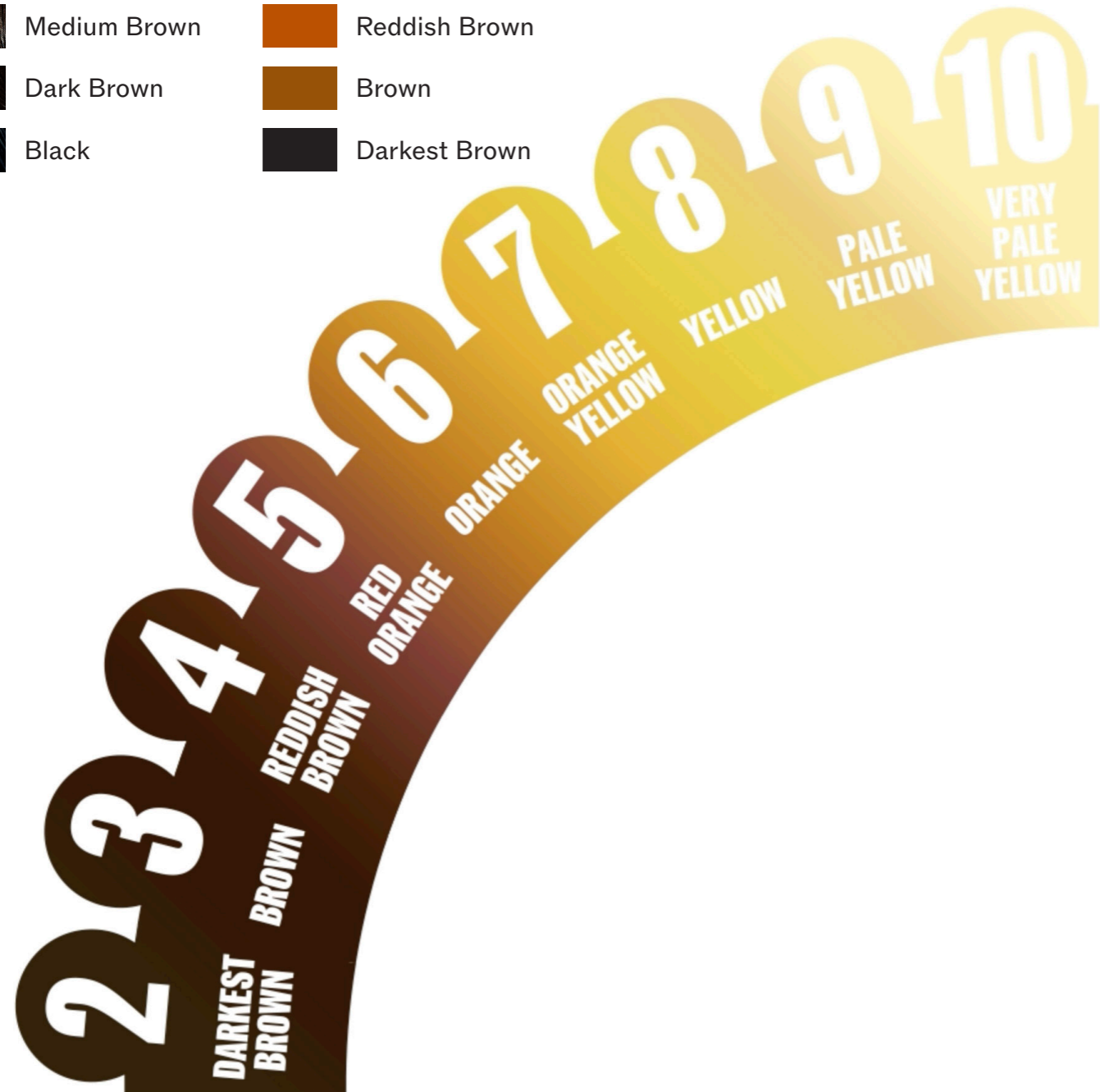
How long do you need for each technique?

Which salon treatments will you use?

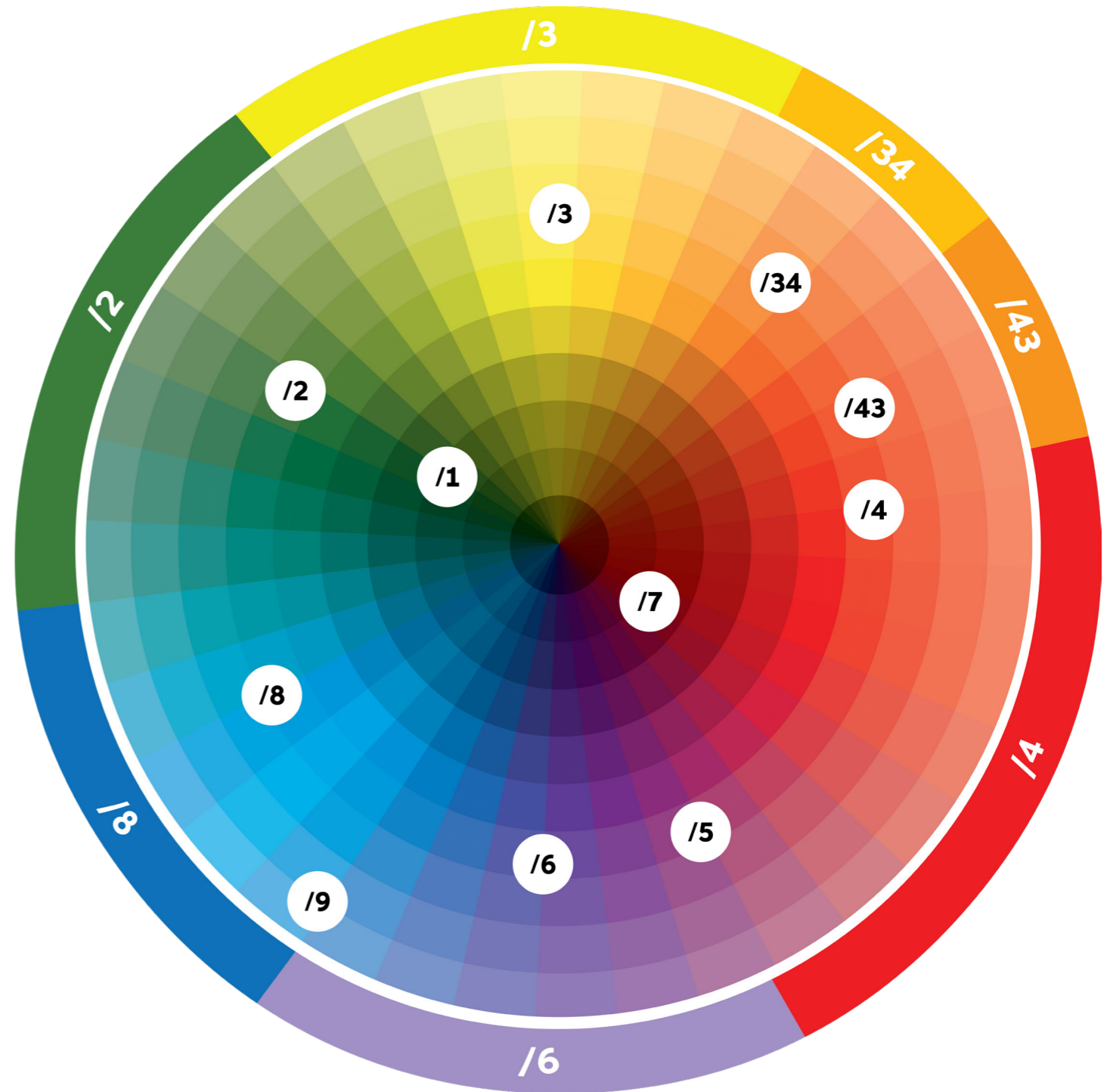
Which home care will you recommend?

NUMBERING SYSTEM & LIGHTENING CURVE

DEPTH		UNDERLYING PIGMENT		
10/0		Lightest Blonde		Very Pale Yellow
9/0		Very Light Blonde		Pale Yellow
8/0		Light Blonde		Yellow
7/0		Medium Blonde		Orange Yellow
6/0		Dark Blonde		Orange
5/0		Light Brown		Red Orange
4/0		Medium Brown		Reddish Brown
3/0		Dark Brown		Brown
2/0		Black		Darkest Brown



COLOR CIRCLE



CUT TECHNIQUE BRONDE BIXIE

BY BRIANA
CISNEROS

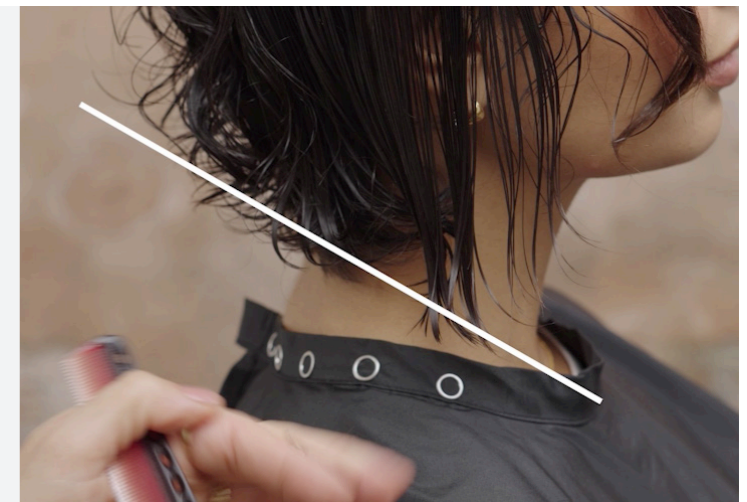


BEFORE



STEP 3: LENGTH

Using the back as a guide,
razor your length so it is shorter
at the back & longer at the front.



STEP 4: FRINGE/BANGS

Elevate the hair to 90 degrees from
the head shape. Cut shorter to longer.
Over direct all hair into the centre.

At natural fall, cut the centre shorter,
keep the sides longer.



STEP 1: LENGTH

At the back, razor your length in
a concave shape, shorter in the nape
and longer towards the ears.



STEP 5: TOP SECTION

Use the razor to channel
cut the lengths.



STEP 2: GRADUATION

Elevate the hair slightly and use the
razor to channel cut the lengths.



COLOR TECHNIQUE BRONDE BIXIE

BY BRIANA
CISNEROS



STEP 3: FACE FRAME

30g Blondorplex
+ 60g 6%

Lighten baby-fine weaves
in the fringe/bangs section,
apply formula root to tip.



STEP 4: TIP-OUT

30g Blondorplex
+ 60g 6%

Lighten the hair between
each foil. Backcomb
the hair, and apply
lightener using a deep
"V" application.



STEP 1: BABYLIGHTS

30g Blondorplex
+ 60g 6%

Lighten baby-fine weaves
in the first three foils,
apply formula root to tip.



STEP 5: ROOT SHADOW

COLOR TOUCH
20g 5/0
+ 20g 5/97
+ 80g 4%

Apply formula to the
roots, blending 5cms
down the hair.



STEP 2: HIGHLIGHTS

30g Blondorplex
+ 60g 6%

Lighten medium-large
weaves through the rest
of the section, gradually
pivoting, so that your last
section is horizontal.



STEP 6: TONER

COLOR TOUCH
35g 8/73
+ 10g 9/97
+ 90g 4%

Apply formula to the
lengths and ends.



COLOR TECHNIQUE BEACH BLONDE

BY BRIANA
CISNEROS



BEFORE



STEP 1: CONTOUR LIGHTS

A: 60g Blondorplex
+ 120g 4%
B: 15g 12/89 + 15g 12/1
+ 60g 9%
C: 30g 8/97
+ 30g 9%



Start at the hairline with fine weaves, increase size of weaves as you work through the section, finishing with large weaves.

Alternate formulas A, B & C. Apply formula root to tip.

Repeat in all sections.



FINE WEAVE



MEDIUM WEAVE



LARGE WEAVE

STEP 2: TIP-OUT

D: 30g Blondorplex
+ 60g 6%

Backcomb the hair between each foil. Apply lightener to lengths and ends. Diagonal back application.

Repeat in all sections.



STEP 3: FACE FRAME

A: 60g Blondorplex
+ 120g 4%
B: 15g 12/89 + 15g 12/1
+ 60g 9%
C: 30g 8/97 + 30g 9%

Start at the hairline with fine weaves, increase size of weaves & pivot towards the parting as you work through the section.

Alternate formula A, B & C. Apply formula root to tip.



STEP 3: ROOT SHADOW & TONE

E: 40g 7/1 + 80g 4%
F: 40g 9/97 + 80g 4%

Apply formula E to roots, do not apply to the front section.

Apply formula F to lengths & ends and front hairline root to tip.



WANT TO KNOW MORE?



Learn more about the
Wella Professionals services
education.wella.com

Discover our online store
wellastore.com

@wellahair

#WELLAEDUCATION

